



**med**<sup>®</sup>  
**TEXTILE**

# MEDICAL BANDAGES AND SUPPORTS

PRODUCT CATALOGUE 2020

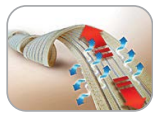
# MedTex Swiss Factory

Factory is located in European Union and specializes in the manufacturing of medical goods for support, rehabilitation and comfort. **MedTex Swiss Factory** is supplied with the modern equipment from leading manufacturers. Factory has implemented the Quality Management System in accordance with international standard protocols ISO 9001 and ISO 13485. The manufacturing process is further certified under European Standards - Conformité Européenne (CE). The main advantages of MedTex Swiss Factory are its good location, high standards of quality, modern high-tech equipment, advanced technology and a wide range of products.

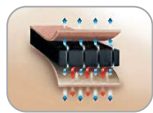
## Production

Technological equipment is a pride of the factory. Taking ultimate quality as a reference point, we have supplied all workshops with the latest equipment from leading manufacturers. Machines are serviced by experienced staff that has been trained in Switzerland. Different special-purpose machines create strong industrial base, which allows to produce high-quality goods. Own facilities supply the factory with elastic belt ribbons and other edging materials. Knitting-weaving area is equipped with automatic machinery made by Swiss company JAKOB MÜLLER A.G., a world leader of weaving machinery for narrow fabrics, and knitting machines from HARRY LUCAS. There are warp looms with RASHELINA weft insertion and NF high capacity sliver-weaving looms. Sewing area is equipped with advanced sewing machines from leading producers such as SIRUBA, GLOBAL, BROTHER, TYPICAL. Strong production capacities are formed by a wide range of special and universal machineries. Packing room is equipped with Italian packing line made by GRAMEGNA company. It helps to make fast and quality packing for various products.

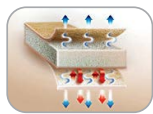
## Material Catalogue



**BINDING BAND** - Firm, elastic, breathable binding band ensures maximal comfort during use.



**AEROPRENE** - Aeroprene or breathable neoprene has unique ability to keep body warmth without hamper to skin breathing.



**NORMOFLEX** - Normoflex, triple breathable fabric with softening and warming properties.



**NATURAL WOOL** - It provides a good heat, humidity control, and performs micromassage warming effect, which leads to improved microcirculation and normalizes blood circulation.



## Material Convention



**COTTON THREAD**



**POLYESTER / POLYETHER**



**LATEX THREAD**



**KAPRON / POLYAMIDE / NYLON**



**FOAMED POLYURETHANE**



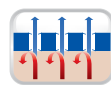
**VISCOSE / NET FABRIC**



**LEATHER-CLOTH**



**ERGONOMIC SHAPE  
FOAM PADS**



**PERFORATED NEOPRENE**



**NEOPRENE**



**SIMULATED STEEL RIBS**



**SIMULATED METALLIC RIBS**



**PLASTIC INSERTS**



**SPIRAL STIFFENERS**



**MONOCENTRIC HINGE (1 AXLE)**



**POLICENTRIC HINGE (2 AXLES)**

## Cervical Collars



Art. 1001



Art. 1005



Art. 1016



Art. 1017



Art. 1026

## SOFT AND RIGID FIXATION CERVICAL COLLARS (WITH RIGID PANEL, WITH TRACHEA OPENING, ADJUSTABLE)

**Indications for use:** Fractures, dislocations, incomplete dislocations of cervical vertebrae; early-stage rehabilitation after surgery on the cervical spine and injuries of cervical vertebrae; evacuation by transportation when cervical spine injuries are suspected; cervical radiculopathy; moderate and severe cervical spine instability complicated by neurological manifestations; osteochondropathies, cervical abnormalities, changes in the structure of vertebrae of different nature; status after surgery on cervical structures not requiring continuous monitoring of the post-operative field; rehabilitation treatment after cranial spinal and cranial-cerebral injuries.

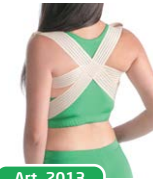
## Posture Supports



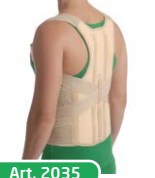
Art. 2005



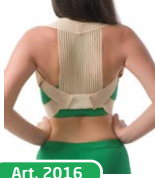
Art. 2011



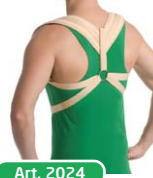
Art. 2013



Art. 2035



Art. 2016



Art. 2024

## POSTURE BRACES AND RECLINATORS (ELASTIC, WITH STAYS, FOR CHILDREN, WITH LIGHT, HARD AND INTENSIVE CLAVICULAR FIXATION)

**Indications for use:** Spinal curvatures (kyphosis, scoliosis), winged scapula. The posture support prevents slouch development, forms habit to hold the back straight, helps to avoid different diseases concerned with poor posture (respiratory, cardiovascular, digestive and other disorders). It ensures girdle of superior extremity opening and vertebral bodies relief with preservation of normal muscle tone. Thoracic spine curvatures (kyphosis, stage I-II of scoliosis). Osteochondropathies, Calve's and Scheuermann-Mau's disease. Prevention of slumping shoulders for those who have sedentary jobs. Rehabilitation after thoracic and lumbar spine traumas. Enhancement of effects of massage and/or manual therapy. Prevention of pathological fractures in cases of osteoporosis, tumors and tuberculosis.

## Rib Belts



Art. 4301



Art. 4302

## RIB BELTS FOR MEN AND WOMEN

**Indications for use:** Myalgia, myositis and intercostal neuralgia. Midterm and late rehabilitation after rib fractures. Rehabilitation after thoracic traumas and surgeries.

## Sacrolumbal Supports



Art. 3001



Art. 3011



Art. 3025



Art. 3027



Art. 3028



Art. 3041



Art. 3046



Art. 3047



Art. 3051

## THORACIC-LUMBAR AND ORTHOPEDIC SUPPORT, MEDICAL ELASTIC BINDER (PREVENTIVE, WITH STAYS, RENAL PADS, FACILITATED, HEATING, ANTI-RADICULITIS, FOR WEIGHT LIFTING)

**Indications for use:** Osteochondrosis, radiculitis, slipped and protruded disks, traumas, chronic pains in sacrolumbal area of spine, rheumatism, neuritis and other diseases. Reliable support to lumbar area, relaxation of spine muscles and improvement of blood circulation. Treatment and prevention of degenerative disk disease, intervertebral bulging disks (protrusions) and herniated disks (early stages), radiculopathies, lumbago. They are used to fix and unload lumbar spine and to make a simultaneous warming effect. Rehabilitation after traumatic lumbosacral spine injuries and operations in this area.



Art. 3055



Art. 4001



Art. 4002



Art. 4045

## Maternity Supports



Binding Band



Plastic Inserts



Art. 4515



Art. 4504



Art. 4505

## MATERNITY BELTS & SUPPORTS (PRE- AND POSTNATAL, FACILITATED, WITH STAYS)

**Indications for use:** Prenatal bandage is specifically designed for expectant mothers to support the abdomen and pelvic organs in physiological rest position, favoring the normal position of the fetus. It helps alleviate discomfort and lower back pain due to pregnancy, unloading the lumbar spine. It reduces the risk of excessive uterine activity, decreases stretching of the skin and amount of abdominal striae. It's particularly helpful in cases of multiple gestation and polyhydramnios. Women with a history of previous spine traumas or disorders will also benefit while wearing the bandage.

## Abdominal Supports



Normoflex



Binding Band



Plastic Inserts



Art. 4008



Art. 4011



Art. 4042

## ABDOMINAL BINDERS AND SUPPORTS (ELASTIC, PREVENTIVE, ADJUSTABLE, UNIVERSAL)

**Indications for use:** Early mobilization after operations on abdomen, including caesarean section. Prevention of ventral postoperative hernias (muscle weakness, large incisions etc.), incarceration of postoperative reducible hernia, epigastrocele, umbilical hernia. Postpartum abdominal support after normal labor. Splanchnoptosis or nephroptosis (as a supporting bandage). They are used for abdomen lifting and silhouette improvement for aesthetic purpose. Rehabilitation after anterior abdominal wall liposuction and plastic surgeries.

## Thigh Supports



Neoprene



Aeroprene



Art. 7228



Art. 7229

## THIGH SUPPORTS ELASTIC AND WARMING TROUSERS

**Indications for use:** The shorts are used for external fixation and dosing muscle compression in the hips and buttocks region; the shorts improve blood circulation, stimulate metabolic processes in the underlying tissues, skin and subcutaneous adipose tissue of thigh and abdomen. Prevention and treatment of cellulite and dilated subcutaneous capillaries. The shorts can be used as a part of multimodality weight loss treatment to reduce the thickness of subcutaneous adipose tissue of thigh, buttocks and abdomen.

## Hernia Supports



Ergonomic Shape Foam Pads



Ergonomic Shape Foam Pad



Art. 5001



Art. 5011



Art. 5051

## HERNIA BANDAGES (DOUBLE-SIDED, UNIFIED) AND BANDAGE FOR UMBILICAL HERNIA

**Indications for use:** Preventive care to eliminate hernia complications and hernia recurrence at postsurgical stage for hernia relapse prevention. Trusses can be used to stop further hernia increase while weight lifting. The bandages are equipped with removable pellets (inserts). Prevention of prolapse and incarceration of hernia sac and further hernia increase. Targeted compression around affected area.

## Lower Extremity Supports



Art. 6037



Art. 6053



Art. 6058



Art. 6112



Art. 6113



Art. 7001



Art. 7010



Art. 7021



Art. 7025



Art. 7026



Art. 7034



Art. 7040



Art. 7702



Art. 7707

**KNEE JOINT SUPPORTS; POSTOPERATIVE STABILIZING KNEE BRACES AND TUTORS; ANKLE AND SHIN SUPPORTS (ELASTIC, ADJUSTABLE, FIXATIVE, HINGED; WITH PATELLA PAD AND ADDITIONAL FIXATION; WITH STAYS AND STRAPS; LIGHT, MEDIUM AND HARD FIXATION; WARMING); WALKERS; HALLUX VALGUS SUPPORTS**

**Indications for use:** Can be used in cases of joints traumas, sprain of ligaments, arthritis, arthrosis, during rehabilitation, after plaster cast. Also used for prevention of common dislocations and traumas while physical exercises. Arthrosis, with arthritis presentations, including rheumatoid and podagric, prophylaxis of patalogic placing of the lower extremity during moderate valgus or varus shank angulation. Used as a splint during transport immobilization, when present plaster allergy, traumas of capsular and ligamentous system of the knee-joint with different degree of difficulty, undisplaced fractures of shin-bone intercondylar eminence, moderate expressed instability of joints, including paralytic origin. Preventions from shank muscles traumas in event of high loads (for instance, sport activities). Sural traumas (particularly spasms, sprains, ruptures). Repeated traumas prevention and muscles injuries. Conservative and postoperative treatment.

## Upper Extremity Supports



Art. 8005



Art. 8013



Art. 8322



Art. 8505



Art. 8512



Art. 8514



Art. 8551



Art. 8552



Art. 8555



Art. 8556



Art. 9907

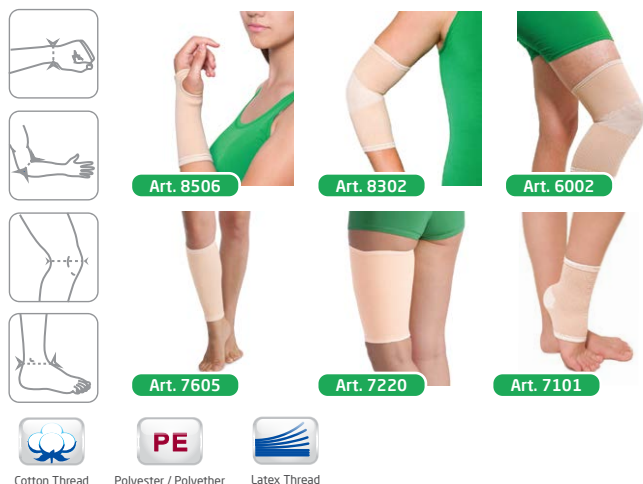


Art. 9912

**SHOULDER AND ELBOW SUPPORTS; ARM SUPPORT CUSHIONS; ROM ELBOW BRACES; ARM SLINGS; WRIST WRAPS (ELASTIC, FIXATIVE, ADJUSTABLE, WITH ADDITIONAL STRAPS AND SPLINTS; WITH THUMB FIXATION, IMMOBILIZERS, MEDIUM AND LIGHT FIXATION, FACILITATED, WARMING)**

**Indications for use:** Traumas, injuries, sprain of joint ligaments. Prevention from development and exacerbation of inflammatory joint diseases (arthritis, tendinitis, tendovaginitis). Pain syndrome by chronic degenerative joint diseases (arthrosis and osteoarthritis). Injuries prevention during sports activities, and job strain on the joint. Incipient functional therapy in event of intra-articular fractures in joint. Early and mid-range immobilization of joint after endoprosthesis replacement. Conservative treatment of joint luxations, epicondyles fracture of humeral distal part without displacement. Pain affecting caused by trauma or injury and different joint disorders. Condition after trauma and/or operation. Professional hazardous exposures (vibration, rotation, lifting of weights). Trauma prevention at all levels of sport and physical activities. Rheumatic joint diseases. Rehabilitation after upper extremity subluxations. Arm support if both acute and chronic inflammatory joint diseases of upper extremity are observed. Upper extremity paresis and paralysis.

## Knitted Elastic Supports



## KNITTED ELASTIC SUPPORTS (KNEE, ANKLE, ELBOW, ETC.)

**Indications for use:** They can be used in cases of joint traumas, sprain of ligaments, arthritis, arthrosis, during rehabilitation after plaster cast, also used for prevention of common dislocations and traumas while physical exercises. Soft and reliable fixation and compression of joints. Breathable fabric stretches in four directions for comfortable use.

## Elastic Bandages



## MEDICAL ELASTIC BANDAGES WITH MEDIUM TENSILITY, 80 MM, 100 MM, 120 MM WIDTH

**Indications for use:** Prevention and curing of traumas and diseases of upper and lower extremities: varicose, chronic venous inflammation before and after surgery, rise of trombophlebitis of superficial vein and trombosis of deep vein. Bandage can be used for preventing and curing traumas and diseases of joints (arthritis, arthrosis, ligamentous laxity), unloading of damaged joint. The bandage fixes, heats, decreases hypostasis, stops inflammation, defends against traumas during sports exercises, hard physical work, prolonged static load.

Art.	Length	Width
02x80x1	1 m	8 cm
02x80x1,5	1,5 m	8 cm
02x80x2	2 m	8 cm
02x80x2,5	2,5 m	8 cm
02x80x3	3 m	8 cm
02x80x3,5	3,5 m	8 cm
02x80x4	4 m	8 cm
02x80x5	5 m	8 cm
12x120x5	5 m	12 cm

Art.	Length	Width
02x100x1	1 m	10 cm
02x100x1,5	1,5 m	10 cm
02x100x2	2 m	10 cm
02x100x2,5	2,5 m	10 cm
02x100x3	3 m	10 cm
02x100x3,5	3,5 m	10 cm
02x100x4	4 m	10 cm
02x100x5	5 m	10 cm
02x100x10	10 m	10 cm

## Supports for Children



## SUPPORTS FOR CHILDREN: CHILD RECLINATOR, PAVLIK HARNESS, SHOULDER WRAP (DESAULT'S BANDAGE), CHILD CERVICAL COLLAR.

**FreiCare Swiss AG**  
Seepark 6  
CH - 9422 Staad SG  
Switzerland  
Phone: + 41 71 855 07 55  
info@freicare.ch  
dr-frei.com

**Medpack Swiss Group AG**  
Seepark 6  
CH - 9422 Staad SG  
Switzerland  
Phone: + 41 71 855 07 55  
contact@medpack-swiss.com  
medpack-group.com

**MedTex Swiss Ltd**  
15 Konservna str.  
Gabrovo 5300  
Bulgaria  
Phone: +359 888 059 356  
info@medtex-swiss.ch  
www.medtex-swiss.ch

